

## ENVIRO-KLEEN 9500 – TECHNICAL DATA SHEET

---

### Exterior Aircraft Cleaner

#### What is Enviro-Kleen 9500?



Enviro-Kleen 9500 is a blend of non-ionic surfactants, emulsifiers, sequestrants, metal deactivator and our proprietary biological additives from yeast extract and functional enzymes.

Soils, which develop on the aircraft exterior surface, are usually quite complex and it is often necessary to use two different types of cleaning materials to remove them. Usually a heavy duty alkaline or solvent cleaner is used followed with an acidic material to remove carbonaceous deposits, oxidized and carbon deposits.

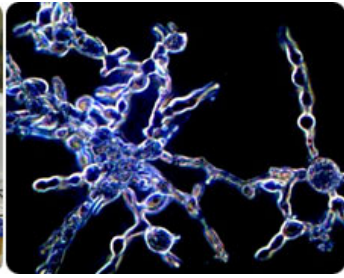
Enviro-Kleen 9500 has been formulated to provide dual action in one step cleaning. It has a high penetrating action which cuts through oil, grease and carbon quickly.

Enviro-Kleen 9500 rinses freely and completely with water without leaving any oil residue.

#### Advantages of Enviro-Kleen 9500

- Excellent emulsification characteristics
- Inhibits corrosion
- Safer on ferrous and non-ferrous metals
- Very low vapour pressure
- 100 % biodegradable
- No Volatile Organic Carbon (VOC)

VOC describes a class of compounds that breakdown quickly after been released into the atmosphere. This reaction creates smog. Enviro-Kleen 9500 does not contain any OVC, therefore it doesn't contribute to the greenhouse effect.



## ENVIRO-KLEEN 9500 – TECHNICAL DATA SHEET

### Boeing Approval

Enviro-Kleen 9500 exterior aircraft cleaner has been approved by Boeing Technology Centre in accordance with Boeing Document D6-17487.

Enviro-Kleen 9500 passed the following tests:

- Lawrence Hydrogen Embrittlement
- Acrylic Crazing
- Paint Softening
- Sandwich Corrosion

### Hydrogen Embrittlement

#### Hydrogen Embrittlement Test Results

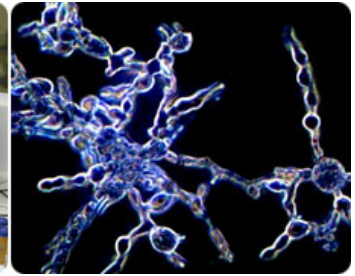
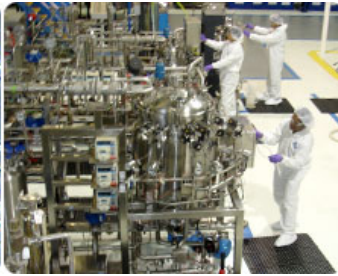
(in accordance with D6-17487, Section 13 for 150 hours)

Load Numbers	Load Weight	Actual Time Tested	Decision
L3233	360 lbs	162 hours	PASS
L3213	358 lbs	162 hours	PASS
L3229	360 lbs	162 hours	PASS

### Acrylic Crazing

#### Acrylic Crazing Test Results

Specimen	#1	#2
30 min	GOOD	GOOD
1 hr	GOOD	GOOD
2 hr	GOOD	GOOD
4 hr	GOOD	GOOD
8 hr	GOOD	GOOD
PASS/FAIL	PASS	PASS



## ENVIRO-KLEEN 9500 – TECHNICAL DATA SHEET

### Paint Softening    Paint Softening Test Results

<b>Finish: BMS 10-60 Type II</b>			
Specimen	Control	Exposed	Pass/Fail
#1	5H	5H	PASS
#2	5H	5H	PASS
#3	5H	5H	PASS

<b>Finish: BMS 10-100</b>			
Specimen	Control	Exposed	Pass/Fail
#1	F	HB	PASS
#2	F	HB	PASS
#3	F	HB	PASS

### Sandwich Corrosion    Sandwich Corrosion Test Results

<b>Test Specimen</b>	<b>Corrosion on Control</b>	<b>Corrosion on Test Specimen</b>	<b>Pass/Fail</b>
7075-T6 CLAD (A)	NONE	NONE	PASS
707-T6 CLAD (B)	NONE	NONE	PASS
7075-T6 CHROMIC ACID ANODIZED (A)	NONE	NONE	PASS
7075-T6 CHROMIC ACID ANODIZED (B)	NONE	NONE	PASS

### Physical Properties

**Appearance:** liquid  
**Freezing Point:** 00C  
**Flash Point, COC:** none  
**Boiling Point:** 87 – 93<sup>0</sup>C  
**pH 1% Solution:** 10.00 – 11.00  
**Solubility in Water:** complete  
**Specific Gravity at 15<sup>0</sup>C:** 1.046 – 1.050